



For Earth, For Life
Kubota

B

KUBOTA DIESEL TRACTOR B3150

The newly designed B50 Series tractors bring versatility, power and comfort to tough jobs.



*This information is sourced from overseas and may not necessarily apply locally. It is essential that you confirm specifications and other information with your local Kubota dealer.

Get class-leading luxury and comfort



B3150SU

The new B50 Series tractors take compact tractor capability to the next level with user-friendly operation and outstanding productivity. Equipped with high quality Kubota engines and transmissions, they deliver the extra durability and reliability you demand for a wide range of jobs. The new integrated cab delivers spaciousness and an expanded field of vision for luxury that's beyond their class. Whether you're mowing, landscaping or doing light utility work, the new B50 Series is the best choice for durability, versatility and comfort.

B50 Series

Start with the new Kubota B50 series.



B3150

The new spacious integrated cab brings



REAR WINDOW VENT POSITION

The cleverly devised rear window half-lock opens just enough for fresh air ventilation while minimizing entry of grass and dust. It is also useful when talking to people from inside the cab even with the doors closed.



NEW INTEGRATED CAB DESIGN

The B50 series is the first tractor in its class to employ an integrated cab. The cab and overfenders are integrally welded to the body's sheet metal parts which allows for a 4-pillar construction with rounded glass that delivers more cab space and a wider field of view. The integrated design also eliminates holes in the floor for the pedals for an environment that minimizes noise and unwanted dust from entering the cab for greater comfort.

SPACIOUS & QUIET CAB

The B50 series brings maximum comfort to the operator thanks to the new integrated cab. The 4-pillar design with rounded glass offers more space and panoramic views of your surroundings. Doors open wide for easier entry to and exit from the cab. Comfort is also enhanced through better noise insulation for a quieter interior. The interior includes a storage compartment, cup holder, a pocket for an operator's manual and tool box, all within arm's reach.

DUST-RESISTANT CAB

Keep your cab clean and almost dust-free even after long hours of work. The new integrated cab moves the pedal connections from the floor to the steering column to eliminate any holes in floor. The cab is constructed to minimize the entry of unwanted dust.



more pleasure to any job.



12V SOCKET & STORAGE COMPARTMENT

Charge your cell phone or electric devices with the 12-volt socket next to the storage compartment. And make it readily accessible by placing it in the handy storage compartment above the steering wheel while charging.



AIR CONDITIONER

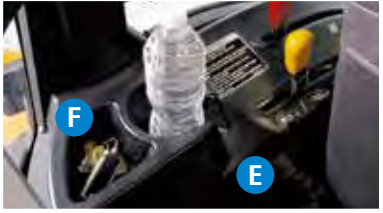
With the rounded cab and strategically placed air outlets that optimize air circulation, the air conditioner keeps you cooler on hot days and the heater keeps warmer on cold days.

REAR WIPER & DEFOGGER

Standard equipped rear wiper and defogger enhance rear visibility when needed.



- A. FRONT STORAGE COMPARTMENT
- B. FRONT WIPER
- C. HANGER
- D. ARM RESTS
- E. CUP HOLDER
- F. STORAGE COMPARTMENT



Other Standard Equipment for Cab:

- Speakers
- Interior light

Cab Options:

- Halogen rear work lights
- Radio/CD or radio



LOADER LEVER

The loader joystick and valve are integrated with the control console as standard equipment on the B50 series. It does not have to be retrofitted when mounting the loader, providing a cleaner look.

USER-FRIENDLY CONTROL LAYOUT

For easier access and smoother operation, the levers are logically arranged on the left and right consoles and switches are concentrated around the instrument panel.

1. STORAGE COMPARTMENT
2. LCD PANEL
3. 12V SOCKET
4. SWITCHES





- A. LOADER LEVER**
- B. CRUISE CONTROL LEVER**
- C. 3-PT CONTROL LEVER**
- D. OPTIONAL REAR REMOTE VALVE LEVER**
- E. PTO SELECTION LEVER**
- F. PTO ON/OFF LEVER**
- G. GEAR SHIFT RANGE LEVER**
- H. 4WD ON/OFF LEVER**

CRUISE CONTROL

Kubota's new multi-stage notch-type cruise control keeps your working speed constant.

HST PEDAL

For easier operation of the HST pedal and more right-side foot space, the brake pedal has been moved to the left side of the steering column.



Easy implement attaching/detaching allows maximum productivity.

PTO POWER

The B50 Series provides the extra strength required for tough tasks with 23.7 HP.

TELESCOPING STABILIZERS

Easily adjust the horizontal sway of the implement by aligning and setting the pin in the proper hole.



**Not available on B3150SU*



TELESCOPIC LOWERLINK ENDS

Intelligently designed telescopic lowerlink ends make attaching and detaching implements quicker than ever.



**Optional on B3150SU*

RATCHET-TYPE LIFT ROD

Ratchet-type lift rod allows speedy adjustments to 3-point mounted implements. Lift rod adjustments can be made with ease.



**Optional on B3150SU*

MID-PTO

The offset PTO allows quick installation and removal of the mid-mount mower.



**Not available on B3150SU*

Comfortable to operate and easy to maintain.

LCD PANEL

The easy-to-read LCD digital panel offers vital information about the tractor at a glance.



TILT-STEERING WHEEL

The steering wheel tilts up and down to give you a more comfortable driving position.



HYDRAULIC POWER STEERING

This feature provides nimble handling while greatly reducing fatigue during prolonged operation.

- A. Convenient location of fuel tank
- B. Cupholder
- C. 12V Socket & Compartment
- D. Tool Box

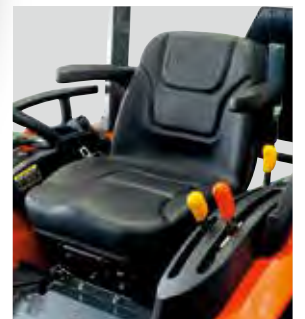
ONE-PIECE METAL HOOD

The front grill and newly designed headlamps are now integrated with the hood for easier opening and closing and more convenient access to the engine.



DELUXE SUSPENSION SEAT

The new suspension seat is specifically designed to absorb shock reducing operator fatigue to make your ride comfortable no matter what the conditions. Arm rests are standard equipment for added comfort.



**Not available on B3150SU*



Easy attach/detach implements give you

LA534A FRONT LOADER



The LA534A front loader offers a large lifting capacity, perfect for landscaping or light utility work. The curved boom matches the new hood design for a sleek and modern appearance and offers a better field of vision during front loader operations.



INTEGRATED LOADER VALVE AND JOYSTICK

Loader operations are more convenient with the 4-position valve and control lever. This fully integrated ergonomically positioned valve lets you attach the front loader and other front implements quickly and easily.



THIRD FUNCTION VALVE (Optional)

The optional 3rd function valve broadens the scope of the front loader operation by enabling use of a grapple bucket and other hydraulically controlled attachments. The 3rd function valve can be activated with buttons located on the grip of the joystick.



HYDRAULIC SPILL-GUARD

The spill-guard tilts the bucket forward as the loader is raised reducing spillage to make filling and dumping easier.

MID-MOUNT MOWER

Ultra-sturdy and highly versatile mid-mount mowers with a choice 60-inch or 72-inch cutting widths, feature cutting height adjustments from 1.5 - 4 inch in 0.5 inch increments.

Front Loader Specifications

Model		LA534A
Maximum lift height (to bucket pivot pin)	mm	2150
Clearance with attachment dump	mm	1712
Maximum dump angle	deg.	38.1
Max. rollback angle	deg.	28.6
Rated operating load (500 mm forward)	kg	350
Breakout force (pivot pin)	kg	1053
Breakout force (19.7in. forward)	kg	767

Mid Mount Mower Specifications

Model		RCK60-30B	RC72-30B
Type		Side Discharge	
Number of blades		3	
Mounting method		Floating	
Cutting width	in. (mm)	60 (1524)	72 (1826)
Cutting height	in. (mm)	1.5 to 4.0 (38 to 102)	
Adjustment of cutting height		Gauge wheel	
Weight	kg	170	210

versatility for all your weekend tasks.

BH77 BACKHOE

The BH77 Backhoe is performance-matched with the B50 tractors to deliver more power and greater digging capacity. Additionally, the BH77 backhoe features a curved boom, protected hoses, quick attach/detach mounting system, and optional 6-position mechanical thumb. (BH77 Backhoe available for ROPS models only)



Backhoe Specifications

Model		BH77
Transport height	mm	2051
Stabilizer spread - transport	mm	1315
Ground clearance	mm	319
Digging depth 2ft flat bottom	mm	2331
Operating height fully raised	mm	3029
Loading height (length of dipper cyl. = 715mm)	mm	1693
Loading reach (length of dipper cyl. = 715mm)	mm	1290
Reach from swing pivot	mm	3165
Swing pivot to rear axle center line	mm	976
Angle of departure per SAE J1234	deg.	17.3
Swing arc	deg.	180



REVERSIBLE SEAT

When its time to switch from loading to back-hoe, simply lift the reversible seat and swivel it to face backhoe controls. The seat also can be adjusted forward and back for optimum operator comfort.



4-POINT QUICK-ATTACH SYSTEM

With its four connecting points and pin-and-hook type quick-attach system, the backhoe can be attached in minutes—without tools.



Specifications

Model	B3150HD		B3150SUHD		B3350HDCC	
Engine						
Type	E-TVCS, liquid cooled, 4-cylinder diesel					
Make, Model	V1505-E3-D26BH-A					
PTO horsepower	HP (kW)	23.7 (17.7)				
Engine gross horsepower*	HP (kW)	31.0 (22.8)				
Rated RPM	rpm	2500				
Bore and stroke	mm	78 x 78.4				
Displacement	cc	1498				
Air cleaner	Double element					
Lubrication	Forced lubrication					
Cooling system	Pressurized radiator					
Radiator fan	Radial air flow					
Capacities						
Fuel tank	ℓ	27				
Cooling system	ℓ	4.6				
Engine oil	ℓ	4.0				
Transmission case	ℓ	15				
Drive train						
Clutch	N/A					
Transmission	HST (3 ranges)					
Differential lock	Standard					
Final drive	Standard					
Brake	Multi-plate wet disc					
PTO						
Type	Independent					
Rear	rpm	540				
Mid	rpm	2400	N/A			2400
Hydraulics						
Type	Open center					
Pump	Dual pump					
Total pump output	ℓ/min.	33.1				
Hydraulic outlet	Rear outlet					
3-point hitch	Category I					
Hydraulic control system	Position control valve		Quarter inching valve		Position control valve	
Lift capacity at lift point	kg	970				
24" behind LP	kg	760				
Cruise control	STD		OPT		STD	
Steering	Hydraulic power steering					
Standard tyre size						
Farm (front / rear)	7-12 / 12.4-16					
Turf (front / rear)	24 x 8.50 - 12 / 13.6 - 16					
Industry (front / rear)	23 x 8.50 - 14R4 / 12.4 - 16R4					
Travelling speeds						
Forward (turf tyre / farm tyre)	km/h	0 - 18.0				
Reverse	km/h	0 - 13.5				
Dimensions						
Overall length (w/o 3P)	mm	2570		2900		
Overall width (min. tread)	mm	1365				
Overall height	mm	2245		2150		
Tread (front / rear)	mm	935 / 1050				
Wheelbase	mm	1666				
Ground clearance	mm	370				
Turning radius with brake	m	2.1				
Weight	kg	840		1035		
Other Features						
Telescopic lower link ends	STD		N/A		STD	
Drawbar	STD					
Seat suspension	Damper seat suspension		Coil spring		Damper seat suspension	
Armrest	STD		N/A		STD	
Generator	Dynamo				Alternator	
Integrated cab	N/A				STD	
Standard features	Loader valve, Tilt-steering, 12V power socket, Radio ready speaker (only on HDCC)					
Implements						
Mid mower	RCK60-30B / RC72-30B		N/A		RCK60-30B / RC72-30B	
Loader	LA534A					

*SAE J1995

The company reserves the right to change the above specifications without notice. This brochure is for descriptive purposes only.

Please contact your local Kubota dealer for warranty information. For your safety, Kubota strongly recommends the use of a Rollover Protective Structure (ROPS) and seat belt in almost all applications. For complete operational information, the operator's manual should be consulted.

©2014 Kubota Corporation



KUBOTA Tractor Australia Pty Ltd

25-29 Permas Way, TRUGANINA Vic, 3029
 Freecall: 1800 334 653
 Email: sales@kubota.com.au

Web Site: <http://www.kubota.com.au>

CB Norwood Distributors Ltd

PO Box 1265, 888 Tremaine Avenue,
 Palmerston North 0800 KUBOTA
 Tel: 06 356 4920 Fax: 06 356 4939

Web Site: <http://www.kubota.co.nz>