

**BUILT
WITH
MORE**

BITE

AUTUMN / WINTER 2020

**TRACTORS
RANGING
FROM
26-115HP**



**1800 186 866
WWW.KIOTI.COM.AU**


KIOTI

20 YEARS IN AUSTRALIA – AND 20,000 SALES!



In 2000, Geoff and Craig Maber imported the first Kioti Daedong tractor to Australia after searching Europe and Asia for a reliable compact tractor to suit Australian conditions.

It's not surprising they found their solution in South Korea at Daedong Industrial Co. So many South Korean brands have become household names around the world: Samsung, Hyundai, LG Electronics, Hankook Tyres and Kia, to name a few.

Today, as PFG Australia and Daedong Industrial Co. celebrate 20 years of Kioti tractors in Australia, sales here have topped 20,000 units, and the name Kioti is recognised everywhere.

Underpinning Kioti's phenomenal success in the Australian market are two major factors: unswerving attention to what farmers need, and continual application of best methods in design, engineering and service.

For more than 70 years, Kioti's parent company Daedong Industrial Co. has designed and produced mechanised farming equipment.

Their philosophy combines a critical understanding of farming together with ongoing development in practical engineering, and shrewd investment in plant and technology.

From its South Korean headquarters through all its subsidiaries, the company continues to maintain a culture of eco-friendly product development, responsiveness to market needs and rigorous quality assurance.

It has built a secure global market across 60 countries for Kioti Daedong products.

The South Korean giant is a today household name throughout Australasia because of the foresight of the Maber family, who set out 20 years ago to find exactly what farmers had been asking for. 20,000 Kioti sales say they got it right.

During 2020, Kioti tractors will provide ongoing and crucial assistance in fire-affected areas, as a key factor in PFG Australia's Fire Relief 2020 program, helping to rebuild farms and rural communities.

PFG AUSTRALIA Fire Relief 2020



PFG Australia launched the "Fire Relief 2020" support program on January 14th in response to the devastating bushfires that Australia has endured. We are a proud supplier and partner to the Australian Agriculture Industry, and we believe it is our responsibility to provide urgent and immediate relief and support for those in great need, our regional fire affected communities.

We are proud to advise that PFG Australia have in partnership with a number of key suppliers, initiated recovery and clean up programs in seriously fire affected regions throughout Australia. Activities including baling, feed distribution, logistics activities, farm clean ups, refencing programs, land tillage and seeding programs are already underway.

Tractors are being provided by Kioti Australia and Deutz-Fahr Australia and in 4 primary regions of Australia, with machinery also provided through our McHale, Vicon, Maschio and Aitchinson brands.

We can also confirm that the program is being undertaken in partnership with our National Dealer Network and will continue throughout the 2020 year. If you wish to make an enquiry please contact PFG Australia on 03 8372 0511.



BUILT WITH



CONTENTS

02 20 YEAR ANNIVERSARY
03 PFG AUSTRALIA
04 CS2610
06 CK3010

08 CK3710 & CK4210
10 EX5310 & EX5810
12 DK4810 & DK5810
14 NX6020

THE NAME BEHIND THE BRAND

PFG Australia is a wholly owned subsidiary of Power Farming Wholesale Ltd. This privately-owned company, headquartered in New Zealand, has a three generation history of service to Australian and New Zealand tractor markets.

PFG Australia sources leading tractor and agricultural machinery brands from around the world, distributing them through extensive national dealer networks, and servicing the market from several strategically located distribution hubs.

Products are trialled at PFG Australia's 4.5ha purpose-built headquarters in Derrimut, Victoria, with onsite fieldwork demonstrations, warehousing and display areas, conference facilities and service training centre.

Without exception, brands chosen by PFG Australia are best-in-class products incorporating the latest in technology and design.

For 20 years, PFG Australia has selected the best Kioti products to suit the needs of farmers here, with support from a strong national network of 85 dealers.

On this, the 20th anniversary of Kioti in Australia, the team at PFG Australia would like to thank Daedong Industrial Co. for consistent supply and ongoing development of great Kioti products.

We also want to thank our skilful and knowledgeable dealers for all their hard work. And last but not least, we want to thank our loyal customers for their appreciation and enjoyment of Kioti products. 20,000 units sold by 2020.

Here's to the next 20 years!

PFGAUSTRALIA

AND WHAT DO OUR CUSTOMERS THINK ABOUT KIOTI?

"I've had my Kioti for 4 years and it's been brilliant!"

"Very practical and versatile."

"We highly recommend Kioti tractors."

"It's been absolutely wonderful!"

"It's a great performer."

"It's the best. I love using it."

"Great value for money."

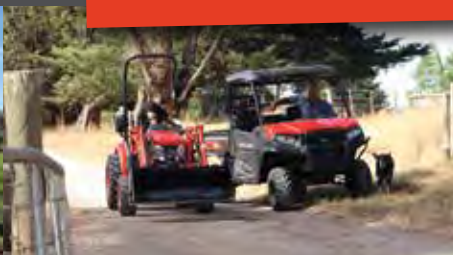
"It feels very solid and it's extremely easy to manoeuvre."

"It's easy to operate and very comfortable."



MORE

BITE



16 RX6030, RX7030 & RX8030

18 PX9520, PX1052 & PX1153

20 UTV DIESEL

22 4 YEAR WARRANTY

23 FINANCE

24 KIOTI DEALERS

PH: 1800 186 866

WWW.KIOTITRACTORS.COM.AU



CS2610

26HP

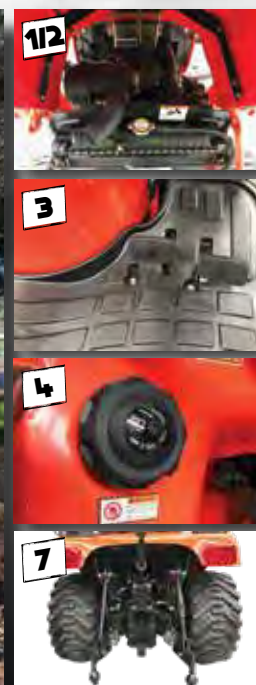
SO HOW DOES THE CS2610 COMPARE WITH THE REST?



10 BEST SPECIFICATIONS

	KIOTI CS2610HST	JOHN DEERE 1025R ^{^^}	KUBOTA BX2680 ^{^^}
1. HORSE POWER MAX	26 ✓	23.9	25.5
2. ENGINE DISPLACEMENT (CC)	1131	1267 ✓	1001
3. TWIN PEDAL SIDE BY SIDE HST FOOT CONTROL	STANDARD ✓	STANDARD ✓	-
4. FUEL CAPACITY	25.5 ✓	21.2	25.0
5. TRACTOR WEIGHT	675 ✓	655	670
6. HYDRAULIC SYSTEM TOTAL FLOW L/MIN	24.6 ✓	24.5	23.5
7. 3 POINT LINKAGE LIFT CAPACITY KG (610MM) BEHIND	318	344 ✓	310
8. INDUSTRIAL TYRES STANDARD	STANDARD ✓	STANDARD ✓	STANDARD ✓
9. FORWARD TRAVEL SPEED KPH MAX	16.6 ✓	14.6	13.5
10. LOADER WITH 4IN1 STANDARD ^{^^}	STANDARD ✓	OPTIONAL COST	OPTIONAL COST
	8/10	4/10	1/10

[^] INFORMATION SOURCED FROM PUBLIC WEBSITES
^{^^} WHEN TRACTOR IS PURCHASED WITH LOADER



RECOMMENDED ATTACHMENTS



**MOWER
DECK**
\$2,795
INC GST



BACKHOE
\$6,995
INC GST



**SLASHER
1.0M**
\$1,395
INC GST



**CARRYALL
1.2M**
\$595
INC GST



CS2610

ROPS TRACTOR & 4IN1 LOADER

- 26 HP ENGINE
- LARGE 1131CC DIESEL ENGINE
- TWIN PEDAL HST TRANSMISSION
- INDEPENDENT PTO
- TIGHT TURNING CIRCLE

FINANCE FROM 3.49%¹ PA OVER 3 YEARS CS2610 ONLY

\$20,995* INC GST

*DELIVERY FEE MAY APPLY.



ADD
60 INCH
MOWER
DECK

= \$23,790* INC GST



ADD
BACKHOE

= \$27,990* INC GST



RIPPER
PIPE LAYER

\$645
INC GST



GRADER
BLADE
1.2M

\$1,245
INC GST



ROTARY
TILLER
1.05M

\$2,395
INC GST



POST HOLE
DIGGER
FROM

\$1,795
INC GST



FLAIL
MOWER
1.25M

\$2,095
INC GST

CK3010 **30HP**

SO HOW DOES THE **CK3010** COMPARE WITH THE REST?



10 BEST SPECIFICATIONS

	KIOTI CK3010HST	TYM T313 ^{^^}	KUBOTA B3150 SUHD ^{^^}
1. HORSE POWER MAX	30	29	31 ✓
2. ENGINE DISPLACEMENT (CC)	1393	1318	1498 ✓
3. 3 POINT LINKAGE LIFT CAPACITY KG (610MM) BEHIND	546	500	760 ✓
4. HYDRAULIC SYSTEM TOTAL FLOW L/MIN	42.9 ✓	30	33.1
5. INDUSTRIAL TYRES STANDARD	STANDARD ✓	STANDARD ✓	OPTIONAL COST
6. TRACTOR WEIGHT (KG)	1025 ✓	898	840
7. HST CRUISE CONTROL	STANDARD ✓	STANDARD ✓	OPTIONAL COST
8. FUEL TANK EASY ACCESS AT REAR	STANDARD ✓	STANDARD ✓	-
9. INTEGRATED HYDRAULIC JOYSTICK FOR LOADER	STANDARD ✓	STANDARD ✓	STANDARD ✓
10. LOADER WITH 4IN1 STANDARD ^{^^}	STANDARD ✓	STANDARD ✓	OPTIONAL COST
	7/10	5/10	4/10

[^] INFORMATION SOURCED FROM PUBLIC WEBSITES
^{^^} WHEN TRACTOR IS PURCHASED WITH LOADER



RECOMMENDED ATTACHMENTS



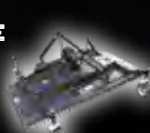
**SLASHER
1.2M**

\$1,795
INC GST



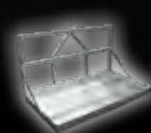
BACKHOE

\$7,995
INC GST



**FINISHING
MOWER
1.5M**

\$1,895
INC GST



**CARRYALL
1.2M**

\$595
INC GST



**FLAIL
MOWER
1.25M**

\$2,095
INC GST



CK3010

HST & 4IN1 LOADER

- 30 HP KIOTI DIESEL ENGINE
- 2 RANGE HST TRANSMISSION
- HEAVY DUTY FRONT AXLE
- INDEPENDENT PTO
- 1X REAR REMOTES STANDARD

FINANCE FROM 3.49% PA OVER 3 YEARS CK3010 ONLY

\$27,995* INC GST

*DELIVERY FEE MAY APPLY.



ADD BACKHOE

= \$35,990* INC GST



**RIPPER
PIPE LAYER**
\$845
INC GST



**GRADER
BLADE
1.2M**
\$1,245
INC GST



**ROTARY
TILLER
1.25M**
\$2,595
INC GST



**POST HOLE
DIGGER
FROM**
\$1,795
INC GST



**POST HOLE
DIGGER
HYDRAULIC DOWN
FORCE HEAVY DUTY**
\$2,795
INC GST



CK3710 & CK4210

37-42HP

SO HOW DOES THE **CK3710** COMPARE WITH THE REST?



10 BEST SPECIFICATIONS

	KIOTI CK3710HST	JOHN DEERE 3038E ^{^^}	KUBOTA L3800HD ^{^^}
1. HORSE POWER MAX	37 ✓	36.6	35.9
2. ENGINE DISPLACEMENT (cc)	1829 ✓	1500	1826
3. TWIN PEDAL SIDE BY SIDE HST FOOT CONTROL	STANDARD ✓	STANDARD ✓	-
4. THREE RANGE HYDROSTATIC TRANSMISSION	STANDARD ✓	-	STANDARD ✓
5. HYDROSTATIC TRANSMISSION LINK PEDAL	STANDARD ✓	-	-
6. HYDRAULIC SYSTEM TOTAL FLOW L/MIN	44 ✓	35.2	40.2
7. 3 POINT LINKAGE LIFT CAPACITY KG (610MM) BEHIND	740 ✓	615	651
8. HYDRAULIC REAR REMOTES 2 SETS STANDARD	STANDARD ✓	OPTIONAL COST	OPTIONAL COST 1 ONLY
9. INTEGRATED HYDRAULIC JOYSTICK FOR LOADER	STANDARD ✓	STANDARD ✓	-
10. LOADER WITH 4IN1 STANDARD ^{^^}	STANDARD ✓	OPTIONAL COST	OPTIONAL COST
	10/10	2/10	1/10

[^] INFORMATION SOURCED FROM PUBLIC WEBSITES
^{^^} WHEN TRACTOR IS PURCHASED WITH LOADER



RECOMMENDED ATTACHMENTS



SLASHER
1.2 M
\$1,795
INC GST



BACKHOE
\$8,995
INC GST



FINISHING MOWER
1.8M
\$2,195
INC GST



CARRYALL
1.2M
\$595
INC GST



FLAIL MOWER
1.55M
\$2,295
INC GST



CK3710

HST ROPS & 4IN1 LOADER

- 37 HP KIOTI DIESEL ENGINE
- 3 RANGE HST TRANSMISSION
- TWIN PEDAL HST TRANSMISSION
- LINK PEDAL (AUTO THROTTLE)
- 2X REAR REMOTES STANDARD

FINANCE FROM 3.49%^{PA} OVER 3 YEARS CK3710 ONLY

\$31,995* INC GST

*DELIVERY FEE MAY APPLY.



ADD BACKHOE

= \$40,990* INC GST



CK4210M

ROPS & 4IN1 LOADER

- 42 HP KIOTI DIESEL ENGINE
- 9 X 3 MANUAL TRANSMISSION
- DELUXE SUSPENSION SEAT
- HIGH GROUND CLEARANCE
- 2X REAR REMOTES STANDARD

\$31,995* INC GST

*DELIVERY FEE MAY APPLY.

CK4210

HST ROPS & 4IN1 LOADER

- 37 HP KIOTI DIESEL ENGINE
- 3 RANGE HST TRANSMISSION
- TWIN PEDAL HST TRANSMISSION
- LINK PEDAL (AUTO THROTTLE)
- 2X REAR REMOTES STANDARD

\$33,995* INC GST

*DELIVERY FEE MAY APPLY.

FINANCE FROM 3.49%^{PA} OVER 3 YEARS CK4210 ONLY



CK4220M

CAB & 4IN1 LOADER

- 42 HP KIOTI DIESEL ENGINE
- 12 X 12 MANUAL TRANSMISSION
- DELUXE CAB WITH AIR CON / HEATING
- AUTO HYDRAULIC INDEPENDENT PTO
- 2X REAR REMOTES STANDARD

\$39,995* INC GST

*DELIVERY FEE MAY APPLY.

CK4220

HST CAB & 4IN1 LOADER

- 42 HP KIOTI DIESEL ENGINE
- 3 RANGE HST TRANSMISSION
- DELUXE CAB WITH AIR CON / HEATING
- AUTO HYDRAULIC INDEPENDENT PTO
- 2X REAR REMOTES STANDARD

\$41,995* INC GST

*DELIVERY FEE MAY APPLY.

FINANCE FROM 3.49%^{PA} OVER 3 YEARS CK4220 ONLY



PALLET FORKS
\$995 INC GST



GRADER BLADE 1.8M
\$1,545 INC GST



ROTARY TILLER 1.5M
\$2,895 INC GST



POST HOLE DIGGER FROM
\$1,795 INC GST



POST HOLE DIGGER HYDRAULIC DOWN FORCE HEAVY DUTY
\$2,795 INC GST



EX5310 & EX5810

53-58HP

SO HOW DOES THE **EX5310** COMPARE WITH THE REST?



10 BEST SPECIFICATIONS

	KIOTI EX5310	MASSEY FERGUSON 26154R ^{^^}	KUBOTA MX5200D ^{^^}
1. HORSE POWER MAX	53 ✓	47.7	50
2. FORWARD / REVERSE SHUTTLE	STANDARD ✓	-	STANDARD ✓
3. TRANSMISSION SPEEDS	12X12 ✓	8X2	8X8
4. THREE SPEED PTO 540-750-1000	STANDARD ✓	-	-
5. FORWARD TRAVEL SPEED MAX (KPH)	27.9 ✓	27	25.9
6. HYDRAULIC SYSTEM TOTAL FLOW L/MIN	62.4 ✓	60.3	54.4
7. TILT STEERING WHEEL COLUMN	STANDARD ✓	-	-
8. HYDRAULIC REAR REMOTES 2 SETS STANDARD	STANDARD ✓	OPTIONAL COST	OPTIONAL COST
9. AUTO / MANUAL PTO	STANDARD ✓	-	-
10. LOADER WITH 4IN1 STANDARD ^{^^}	STANDARD ✓	OPTIONAL COST	OPTIONAL COST
	10/10	0/10	1/10

[^] INFORMATION SOURCED FROM PUBLIC WEBSITES
^{^^} WHEN TRACTOR IS PURCHASED WITH LOADER



RECOMMENDED ATTACHMENTS



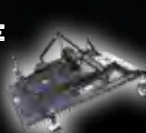
**SLASHER
1.5M**

\$2,495
INC GST



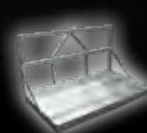
BACKHOE

\$9,995
INC GST



**FINISHING
MOWER
1.8M**

\$2,195
INC GST



**CARRYALL
1.8M**

\$795
INC GST



**FLAIL
MOWER
1.75M**

\$2,495
INC GST



EX5310

MAN ROPS & 4IN1 LOADER

- 53 HP KIOTI DIESEL ENGINE
- 12 X 12 MANUAL TRANSMISSION
- DELUXE SUSPENSION SEAT
- AUTO HYDRAULIC INDEPENDENT PTO
- 2X REAR REMOTES STANDARD

FINANCE FROM 3.49%¹ PA OVER 3 YEARS
EX5310 ONLY*

\$35,995* INC GST

*DELIVERY FEE MAY APPLY.



**ADD
BACKHOE**

= \$45,990* INC GST



EX5810

MAN ROPS & 4IN1 LOADER

- 58 HP KIOTI DIESEL ENGINE
- 12 X 12 MANUAL TRANSMISSION
- DELUXE SUSPENSION SEAT
- AUTO HYDRAULIC INDEPENDENT PTO
- 2X REAR REMOTES STANDARD

FINANCE FROM 3.49%¹ PA OVER 3 YEARS
EX5810 ONLY*

\$37,995* INC GST

*DELIVERY FEE MAY APPLY.



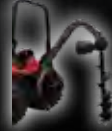
**PALLET
FORKS**
\$995
INC GST



**GRADER
BLADE
1.8M**
\$1,545
INC GST



**ROTARY
TILLER
1.5M**
\$2,895
INC GST



**POST HOLE
DIGGER
FROM**
\$1,795
INC GST



**RIPPER
PIPE
LAYER**
\$845
INC GST



DK4810 & DK5810

48-58HP

SO HOW DOES THE **DK4810** COMPARE WITH THE REST?



10 BEST SPECIFICATIONS

	KIOTI DK4810 HST	CASE IH FARMALL 50B ^{^^}	KUBOTA L4600HD ^{^^}
1. HORSE POWER MAX	48 ✓	47	43.8
2. THREE RANGE HYDROSTATIC	STANDARD ✓	STANDARD ✓	STANDARD ✓
3. HYDROSTATIC TRANSMISSION LINK PEDAL	STANDARD ✓	-	-
4. ELECTRIC CRUISE CONTROL	STANDARD ✓	-	-
5. FORWARD TRAVEL SPEED MAX (KPH)	31.7 ✓	25	25.4
6. HYDRAULIC SYSTEM TOTAL FLOW LIMIN	62.4 ✓	58.4	54.4
7. TILT STEERING WHEEL COLUMN	STANDARD ✓	STANDARD ✓	-
8. HYDRAULIC REAR REMOTES	STANDARD ✓	STANDARD ✓	OPTIONAL COST
9. AUTO / MANUAL PTO	STANDARD ✓	-	-
10. LOADER WITH 4IN1 STANDARD ^{^^}	STANDARD ✓	OPTIONAL COST	OPTIONAL COST
	10/10	3/10	1/10

[^] INFORMATION SOURCED FROM PUBLIC WEBSITES
^{^^} WHEN TRACTOR IS PURCHASED WITH LOADER



RECOMMENDED ATTACHMENTS



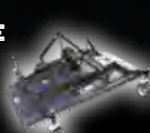
**SLASHER
1.5M**

\$2,495
INC GST



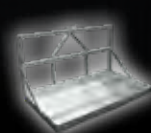
BACKHOE

\$9,995
INC GST



**FINISHING
MOWER
1.8M**

\$2,195
INC GST



**CARRYALL
1.8M**

\$795
INC GST



**FLAIL
MOWER
1.75M**

\$2,495
INC GST



DK4810

HST ROPS & 4IN1 LOADER

- 48 HP KIOTI DIESEL ENGINE
- 3 RANGE HST TRANSMISSION
- DELUXE SUSPENSION SEAT
- AUTO HYDRAULIC INDEPENDENT PTO
- 1X REAR REMOTES STANDARD

FINANCE FROM 3.49%¹ PA OVER 3 YEARS
DK4810 ONLY*

\$39,995* INC GST

*DELIVERY FEE MAY APPLY.



ADD BACKHOE

PRICED FROM
= \$49,990* INC GST



DK5810

HST ROPS & 4IN1 LOADER

- 58 HP KIOTI DIESEL ENGINE
- 3 RANGE HST TRANSMISSION
- DELUXE SUSPENSION SEAT
- AUTO HYDRAULIC INDEPENDENT PTO
- 1X REAR REMOTES STANDARD

FINANCE FROM 3.49%¹ PA OVER 3 YEARS
DK5810 ONLY*

\$42,995* INC GST

*DELIVERY FEE MAY APPLY.



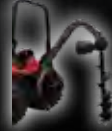
**PALLET
FORKS**
\$995
INC GST



**GRADER
BLADE
1.8M**
\$1,545
INC GST



**ROTARY
TILLER
1.5M**
\$2,895
INC GST



**POST HOLE
DIGGER
FROM**
\$1,795
INC GST



**RIPER
PIPE
LAYER**
\$845
INC GST

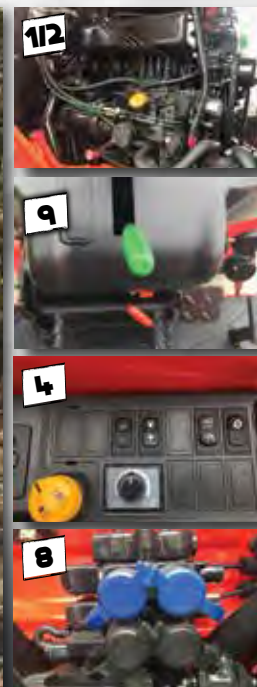
SO HOW DOES THE **NX6020** COMPARE WITH THE REST?



10 BEST SPECIFICATIONS

	KIOTI NX6020	JOHN DEERE 4066M ^{^^}	KUBOTA L5740HDA ^{^^}
1. HORSE POWER MAX	60	65 ✓	57
2. ENGINE DISPLACEMENT (CC)	2435 ✓	1995	2434
3. TRACTOR WHEEL BASE (MM)	1920 ✓	1854	1915
4. AUTO / MANUAL PTO	STANDARD ✓	-	-
5. 3 POINT LINKAGE LIFT CAPACITY KG (610MM) BEHIND	1441 ✓	1134	1350
6. HYDRAULIC SYSTEM TOTAL FLOW L/MIN	67.6 ✓	60.2	55.6
7. TRACTOR WEIGHT	1910 ✓	1710	1770
8. HYDRAULIC REAR REMOTES 2 SETS STANDARD	STANDARD ✓	STANDARD ✓	-
9. HYDROSTATIC TRANSMISSION LINK PEDAL	STANDARD ✓	-	STANDARD ✓
10. LOADER WITH 4IN1 STANDARD ^{^^}	STANDARD ✓	OPTIONAL COST	OPTIONAL COST
	9/10	2/10	1/10

[^] INFORMATION SOURCED FROM PUBLIC WEBSITES
^{^^} WHEN TRACTOR IS PURCHASED WITH LOADER



RECOMMENDED ATTACHMENTS



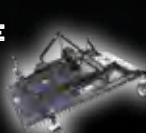
**SLASHER
1.5M**

\$2,495
INC GST



BACKHOE

\$9,995
INC GST



**FINISHING
MOWER
1.8M**

\$2,195
INC GST



**CARRYALL
1.8M**

\$795
INC GST



**BALE
SPIKES**

\$995
INC GST



NX6020

HST ROPS & 4IN1 LOADER

- 60 HP KIOTI DIESEL ENGINE
- 3 RANGE HST TRANSMISSION
- ANTI STALL – HST RESPONSE CONTROL
- LINK PEDAL (AUTO THROTTLE)
- 2X REAR REMOTES STANDARD

FINANCE FROM 3.49%¹ PA OVER 3 YEARS
NX6020 ONLY

\$50,995* INC GST

*DELIVERY FEE MAY APPLY.



ADD BACKHOE

= \$60,990* INC GST



NX6020

HST CAB & 4IN1 LOADER

- 60 HP KIOTI DIESEL ENGINE
- 3 RANGE HST TRANSMISSION
- DELUXE CAB WITH AIR CON / HEATING
- ANTI STALL – HST RESPONSE CONTROL
- 2X REAR REMOTES STANDARD

FINANCE FROM 3.49%¹ PA OVER 3 YEARS
NX6020 ONLY

\$57,995* INC GST

*DELIVERY FEE MAY APPLY.



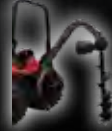
**PALLET
FORKS**
\$995
INC GST



**GRADER
BLADE
1.8M**
\$1,545
INC GST



**ROTARY
TILLER
1.5M**
\$2,895
INC GST



**POST HOLE
DIGGER
FROM**
\$1,795
INC GST



**FLAIL
MOWER
1.75M**
\$2,495
INC GST



RX6030, RX7030 & RX8030

60-80HP

SO HOW DOES THE **RX7030** COMPARE WITH THE REST?



10 BEST SPECIFICATIONS

	KIOTI RX7030	JOHN DEERE 5065E ^{^^}	KUBOTA M7040SUHD ^{^^}
1. HORSE POWER MAX	70 ✓	65	68
2. TRANSMISSION SPEEDS	24X24 ✓	12X12	8X8
3. FUEL TANK CAPACITY	85 ✓	68	70
4. WET CLUTCH WITH HYD FWD / REV SHUTTLE	STANDARD ✓	STANDARD ✓	-
5. 3 POINT LINKAGE LIFT CAPACITY KG (610MM) BEHIND	1768 ✓	1440	1500
6. HYDRAULIC SYSTEM TOTAL FLOW L/MIN	67.6	69 ✓	63
7. ELECTRONIC DE-CLUTCH BUTTON	STANDARD ✓	-	-
8. HYDRAULIC REAR REMOTES 2 SETS STANDARD	STANDARD ✓	OPTIONAL COST	OPTIONAL COST
9. TWO SPEED PTO 540 - 750	STANDARD ✓	STANDARD ✓	-
10. LOADER WITH 4IN1 STANDARD ^{^^}	STANDARD ✓	OPTIONAL COST	OPTIONAL COST
	9/10	3/10	0/10

[^] INFORMATION SOURCED FROM PUBLIC WEBSITES
^{^^} WHEN TRACTOR IS PURCHASED WITH LOADER



RECOMMENDED ATTACHMENTS



**SLASHER
1.8M**
\$3,395
INC GST



**CARRYALL
1.8M**
\$795
INC GST



**BALE
SPIKES**
\$995
INC GST



**PALLET
FORKS**
\$995
INC GST



**PALLET
FORKS
HEAVY DUTY**
\$1,495
INC GST



RX6030

CAB & 4IN1 LOADER

- 60HP KIOTI DIESEL ENGINE
- FORWARD – REVERSE SHUTTLE
- 24X24 MANUAL TRANSMISSION
- DELUXE CAB WITH AIR CON / HEATING
- 2X REAR REMOTES STANDARD

\$50,905* EX GST

FINANCE FROM 0.00% PA OVER 2 YEARS RX6030 ONLY

\$55,995* INC GST

*DELIVERY FEE MAY APPLY.

CASH BACK DEAL



RX7030P

ROPS & 4IN1 LOADER

RX8030P

ROPS & 4IN1 LOADER

- 70HP OR 80HP KIOTI DIESEL ENGINE
- WET CLUTCH FORWARD–REVERSE SHUTTLE
- DECLUTCH BUTTON
- 24 X 24 MANUAL TRANSMISSION
- 2X REAR REMOTES STANDARD

~~**\$49,086**~~ EX GST

~~**\$52,723**~~ EX GST

CASH BACK OF **\$4,091**

CASH BACK OF **\$4,428**

\$44,995* EX GST

\$48,295* EX GST

*DELIVERY FEE MAY APPLY.

*DELIVERY FEE MAY APPLY.

Factory rebate included in advertised price.

FINANCE FROM 0.00% PA OVER 2 YEARS RX TRACTORS ONLY



RX7030P

CAB & 4IN1 LOADER

RX8030P

CAB & 4IN1 LOADER

- 70HP OR 80HP KIOTI DIESEL ENGINE
- WET CLUTCH FORWARD–REVERSE SHUTTLE
- DECLUTCH BUTTON
- 24 X 24 MANUAL TRANSMISSION
- 2X REAR REMOTES STANDARD

\$55,450* EX GST

\$59,995* EX GST

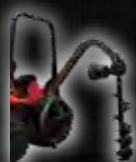
\$60,995* INC GST

\$65,995* INC GST

*DELIVERY FEE MAY APPLY.

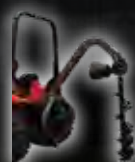
*DELIVERY FEE MAY APPLY.

FINANCE FROM 0.00% PA OVER 2 YEARS RX TRACTORS ONLY



**POST HOLE
DIGGER
FROM**

\$1,995 INC GST



**POST HOLE
DIGGER
HYDRAULIC DOWN
FORCE HEAVY DUTY**

\$2,995 INC GST

**BUILT
WITH
MORE** **BITE**



PX9520, PX1052 & PX1153

95-115HP

SO HOW DOES THE **PX1052** COMPARE WITH THE REST?



10 BEST SPECIFICATIONS

	KIOTI PX1052	JOHN DEERE 5105M ^{^^}	NEW HOLLAND TD5.100 ^{^^}
1. HORSE POWER MAX	105 ✓	105 ✓	98
2. HI / LO TRANSMISSION SPLITTER	STANDARD ✓	-	-
3. TRANSMISSION SPEEDS	32X32 ✓	16X16	12X12
4. FUEL TANK CAPACITY	120 ✓	115	110
5. 3 POINT LINKAGE LIFT CAPACITY KG (610MM) BEHIND	2400	2525	2700 ✓
6. HYDRAULIC SYSTEM TOTAL FLOW L/MIN	79.2	93.6 ✓	81.3
7. AUTO PTO	STANDARD ✓	-	-
8. ELECTRONIC DECLUTCH BUTTON	STANDARD ✓	-	-
9. TWO SETS OF REAR REMOTES	STANDARD ✓	STANDARD ✓	STANDARD ✓
10. LOADER WITH 4IN1 STANDARD ^{^^}	STANDARD ✓	OPTIONAL COST	OPTIONAL COST
	8/10	3/10	2/10

[^] INFORMATION SOURCED FROM PUBLIC WEBSITES
^{^^} WHEN TRACTOR IS PURCHASED WITH LOADER

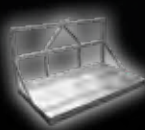


RECOMMENDED ATTACHMENTS



**SLASHER
1.8M**

\$3,395
INC GST



**CARRYALL
1.8M**

\$795
INC GST



**BALE
SPIKES**

\$995
INC GST



**PALLET
FORKS**

\$995
INC GST



**PALLET
FORKS
HEAVY DUTY**

\$1,495
INC GST



PX1153

CAB & 4IN1 LOADER

- 115HP PERKINS DIESEL ENGINE
- WET CLUTCH FORWARD – REVERSE SHUTTLE
- DECLUTCH BUTTON
- 32 X 32 MANUAL TRANSMISSION
- AIR SUSPENSION SEAT

\$79,995* EX GST

FINANCE FROM 0.00% PA OVER 2 YEARS PX1153 ONLY

\$87,995* INC GST

*DELIVERY FEE MAY APPLY.



PX9520

ROPS & 4IN1 LOADER

- 95HP PERKINS DIESEL ENGINE
- FORWARD – REVERSE SHUTTLE
- 16X16 MANUAL TRANSMISSION
- AUTO HYDRAULIC INDEPENDENT PTO
- 2X REAR REMOTES STANDARD

\$56,359* EX GST

\$61,995* INC GST

*DELIVERY FEE MAY APPLY.

*DELIVERY FEE MAY APPLY.

FINANCE FROM 0.00% PA OVER 2 YEARS PX TRACTORS ONLY



PX1052

CAB & 4IN1 LOADER

- 105HP PERKINS DIESEL ENGINE
- WET CLUTCH FORWARD – REVERSE SHUTTLE
- DECLUTCH BUTTON
- 32 X 32 MANUAL TRANSMISSION
- 2X REAR REMOTES STANDARD

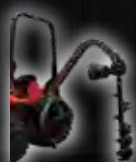
\$69,995* EX GST

\$76,995* INC GST

*DELIVERY FEE MAY APPLY.

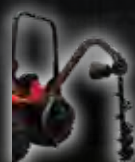
*DELIVERY FEE MAY APPLY.

FINANCE FROM 0.00% PA OVER 2 YEARS PX TRACTORS ONLY



**POST HOLE
DIGGER
FROM**

\$1,995
INC GST



**POST HOLE
DIGGER
HYDRAULIC DOWN
FORCE HEAVY DUTY**

\$2,995
INC GST

**BUILT
WITH
MORE**

BITE

UTV DIESEL

SO HOW DOES THE **MECHRON 2230** COMPARE WITH THE REST?

22-24HP

	KIOTI MECHRON 2230	JOHN DEERE XUV865E ^{^^}	KUBOTA X900G-A ^{^^}
1. ENGINE DIESEL (CC)	1007 ✓	854	898
2. SEATING CAPACITY	3 ✓	3 ✓	2
3. POWER STEERING	YES ✓	NO	YES ✓
4. HYDRAULIC BED LIFT	YES ✓	NO	NO
5. CARGO BOX CAPACITY (KG)	500 ✓	454	500 ✓
6. GROUND CLEARANCE (MM)	304 ✓	280	280
7. TOWING CAPACITY (KG)	590	680 ✓	590
8. CARGO BOX LENGTH (MM)	1280 ✓	1143	1030
9. FUEL CAPACITY (L)	28	42 ✓	30
10. WHEEL BASE (MM)	2240 ✓	2146	2045
	8/10	3/10	2/10

[^] INFORMATION SOURCED FROM PUBLIC WEBSITES



RECOMMENDED ATTACHMENTS



**WINDSCREEN
ACRYLIC
FOR MECHRON**

\$539
INC GST



**WINDSCREEN
GLASS
FOR MECHRON
INCLUDING WIPER**

\$919
INC GST



**WINDSCREEN
TEMPERED
FOR K9
INCLUDING WIPER**

\$1,265
INC GST



**WINDSCREEN
LAMINATE
FOR K9
INCLUDING WIPER**

\$1,744
INC GST



MECHRON 2200

- 22HP KIOTI DIESEL ENGINE
- 2 RANGE CVT TRANSMISSION 40 KPH
- 4WD WITH DIFF LOCK
- 3 SEATER WITH SEAT BELTS
- HYDRAULIC TILT TRAY

FINANCE FROM 3.49%¹ PA OVER 3 YEARS UTVS ONLY*

\$20,995* INC GST

*DELIVERY FEE MAY APPLY.



MECHRON 2230

- 22HP KIOTI DIESEL ENGINE
- 2 RANGE CVT TRANSMISSION 40 KPH
- EXTENDED WHEEL BASE & CARGO TRAY
- 3 SEATER WITH SEAT BELTS
- HYDRAULIC TILT TRAY

FINANCE FROM 3.49%¹ PA OVER 3 YEARS UTVS ONLY*

\$21,995* INC GST

*DELIVERY FEE MAY APPLY.



UTV K9 2400

- 24HP KIOTI DIESEL ENGINE
- 2 RANGE CVT TRANSMISSION 50 KPH
- SAFETY DOORS
- 3 SEATER WITH SEAT BELTS
- HYDRAULIC TILT TRAY

FINANCE FROM 3.49%¹ PA OVER 3 YEARS UTVS ONLY*

\$22,995* INC GST

*DELIVERY FEE MAY APPLY.

BUILT WITH MORE

BITE



4 YEAR

WARRANTY*

All Kioti Tractors ranging from **26hp up to 115hp** come with a standard two year or 1,500 hour warranty covering all components on the tractor.

To compliment this great coverage Kioti Tractors have an additional Driveline coverage to a maximum of four years or 2,000 hours for all models, which is standard with every tractor purchased.

This coverage is a manufacturers coverage and not offered by a third party insurer and has no extra costs or excess required to be paid.

A basic overview of the coverage includes engine, transmission, differentials, axles and all parts contained therein.

So for four years or 2,000 hour warranty your Kioti tractor will have coverage on all major components and everything in between.



FINANCE FOR YOUR KIOTI



PFG CREDIT

In today's marketplace, businesses consider competitive tailored financing options just as important as the equipment features and benefits when they acquire machinery.



SIMPLE APPLICATION
FAST
APPROVAL



UP TO
\$150K
NO FINANCIALS NEEDED



CONVENIENT
MONTHLY
REPAYMENTS



FIXED
INTEREST
RATE



LOAN SECURED BY
EQUIPMENT
ONLY

PFG Credit offers comprehensive financing programs based on innovative financial products to meet the individual needs of our customers.

PFG Credit is provided by De Lage Landen Limited part of the global Rabobank Group - the world's largest agricultural lender. Their knowledge of the Australian rural industry and machinery markets means that customers can get the deal they need.

The various PFG Credit products available to clients are designed to allow businesses to conserve working capital, budget on a fixed rate, fixed term and fixed repayments to suit their cash flow.

3.49%_{PA}

SELECTED MODELS

0.00%_{PA}

RX & PX MODELS

TALK TO YOUR LOCAL DEALER FOR MORE INFO
or email pfgcredit@pfgaustralia.com.au

YOUR LOCAL **KIOTI** DEALER



NSW		
Bayldon Agricultural Supplies	Queanbeyan	02 6297 2833
Central Coast Tractors	Somersby	02 4372 1457
Chaffey's Mower Clinic	Gunnedah	02 6742 5588
Double R Equipment Repairs	Mudgee	02 6372 3257
Double R Equipment Repairs	Rutherford	02 6571 4249
Goulburn Farm Machinery	Goulburn	02 4821 4148
Inland 4WD & Tractors	Wauchope	02 6585 3266
JJ Farm Equipment	Yoogali	02 6964 5959
JTP Machinery	Brogo	02 6492 7151
KC Equipment	Lismore	02 6622 8122
Leslie Farm & Garden	Grafton	02 6642 3599
New Era Machinery Pty Ltd	Orange	02 6361 3355
Newton's Mechanical Repairs	Coonabarabran	02 6842 1167
North Coast Construction Equipment	Coffs Harbour	02 6699 3559
O'Brien's Machinery	Scone	02 6545 2622
Passlow Kioti	Wagga Wagga	02 6925 2101
Robertson Farm Machinery	Robertson	02 4885 1020
Sheather's Machinery	Wingham	02 6553 4507
Stockers & Partridge	Paterson	02 4938 5154
Tony Williams Machinery	Armidale	02 6772 5844
Western Farm Machinery	Warren	02 6847 3422
Wiesners	Walla Walla	02 6029 2151
Windsor Farm Equipment	Vineyard	02 4577 3613

NT		
Farm World	Humpty Doo	08 8988 9411

QLD		
Central Hydraulic & Bearing Supplies	Emerald	07 4982 1222
DJ Steel & Concrete	Biloela	07 4992 2197
DJ Steel & Concrete	Eidsvold	07 4165 1762
DJ Steel & Concrete	Monto	07 4166 1747
Dover & Sons	Beaudesert	07 5540 1800
Dover & Sons	Boonah	07 5463 2600
Engage Ag	Toowoomba	07 4600 8770
Russo & Vella Machinery	Gordonvale	07 4056 1157
KC Equipment	Yatala	07 3297 3000
Lockyer Farm Machinery	Gatton	07 5462 1888
Maranoa Ag & Automotive	Roma	07 4622 4819
McDonald Murphy Machinery	Mackay	07 4952 4550
McDonald Murphy Machinery	Bundaberg	07 4153 6933
McIntosh & Son	Dalby	07 4662 2288
NQ Agricultural Services	Tolga	07 4095 4455
RGM Maintenance	Rockhampton	07 4923 1000
Russo and Vella Machinery	Ingham	07 4776 5195
TMI	Sunshine Coast	07 5476 4888
Vedelago Mechanical Repairs	Stanthorpe	07 4685 2200
Wooroolin Machinery Pty Ltd	Wooroolin	07 4164 2312

SA		
Bascombe Auto Ag	Cummins	08 8676 2980
Cavan Agricultural	Cavan	08 8262 3847
Central Hills Machinery	Mount Barker	08 8391 1414
Murray River Machinery	Renmark	08 8586 6155
Stihl Shop Clare	Clare	08 8842 3405
Top Mark Machinery	Naracoorte	08 8762 0955
Watervale Garage	Watervale	08 8843 0100

TAS		
Australian Chainsaw Products	Launceston	03 6343 0404
Southern Machinery	Kingston	03 6229 1133
TR & KR Shipton	Quoiba	03 6424 8166

VIC		
ADE Turf Equipment	Chelsea Heights	03 9772 6444
AgPower & Transport	Lilydale	03 9739 5006
Alto Motors	Trafalgar	03 5633 1866
Ararat Automotive Services	Ararat	03 5352 1643
Ballarat Tractors	Ballarat	03 5334 2444
Cohuna Car Sales	Cohuna	03 5456 2088
Dowfarm Machinery	Casterton	03 5581 1500
Elders	Bairnsdale	03 5153 1999
Geelong Rural	Geelong	03 5222 4733
Gisborne Power Products	Gisborne	03 5428 8844
Goulburn Valley Ag	Shepparton	03 5832 5500
Greg Allan Farm Machinery	Colac	03 5231 5136
Hocking Trading	Cobram	03 5872 1844
John Sanderson Machinery	Nagambie	03 5794 2272
KV Equipment	Epsom	03 5445 6999
L&G Sheppard & Sons	Kyneton	03 5422 1821
McGregor Machinery	Wangaratta	03 5722 9933
Melbourne Tractors	Camberfield	03 9303 5777
Murray Darling Kioti	Robinvale	0447 553 443
Phillips Farm Machinery	Hamilton	03 5572 1822
Rural Fence and Trade	Whittlesea	03 9716 1800
Stihl Shop Mansfield	Mansfield	03 5775 2711
The Tractor Company	Pakenham	0497 009 163
Wiesners	Wodonga	02 6024 6444

WA		
CD Tractor Sales and Service	Muchea	0447 710 056
Cowaramup Tractors	Cowaramup	08 9755 5207
Marshall Mowers	Albany	08 9841 2199
Western Ag	Kewdale	08 9353 6466
Western Ag	Bunbury	08 9725 7011

PFGCREDIT

*Pricing ex Brisbane, Melbourne and Perth warehouses. Pre-delivery and freight charges may apply.

**0.00%p.a. applies to new Kioti PX & RX tractor models only based on minimum 1/3rd deposit and 24 monthly repayments.

3.49%p.a. applies to all other new Kioti tractor, Mechnon models and UTV's based on minimum 30% deposit and monthly repayments over 3 years.

Standard fees and lending conditions apply to approved ABN holders.

PFG Credit is not provided or intended for personal, domestic or household purposes.

Note: Alternative special finance package rates, terms, deposits and structures are also available up to 5 years.

PFG Credit is a division of De Lage Landen Pty Limited ABN 20 101 692 040.

Offers expire 31st August 2020. Pricing available while stocks last.

WARRANTY
24 months
1500 hours
Full Warranty

48 months
2000 hours
Powertrain Warranty

PICTURES FOR ILLUSTRATION PURPOSES ONLY.

PFG AUSTRALIA

03 8353 3600
www.pfgaustralia.com.au

FEB20 KI-DB004

KIOTI

1800 186 866